

PHOTO LOCATION MAP



Photo 1 - Assemblyman R Stephen Hawley Dr. adjacent to Genesee Community College Campus
EXISTING CONDITION

PHOTO LOCATION MAP

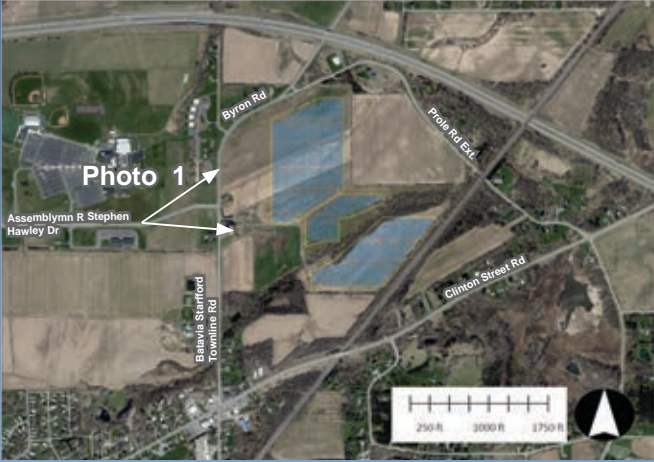


Photo 1 - Assemblyman R Stephen Hawley Dr. adjacent to Genesee Community College Campus
SIMULATED CONDITION WITH LANDSCAPE MITIGATION (YEAR 1 GROWTH)

PHOTO LOCATION MAP

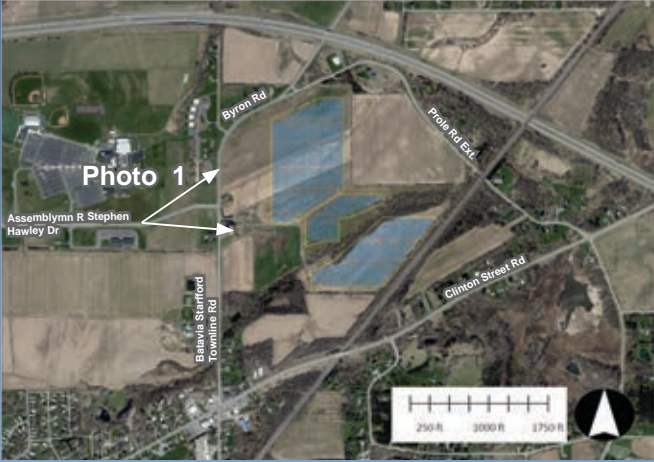


Photo 1 - Assemblyman R Stephen Hawley Dr. adjacent to Genesee Community College Campus
SIMULATED CONDITION WITH LANDSCAPE MITIGATION (YEAR 5 GROWTH)

PHOTO LOCATION MAP

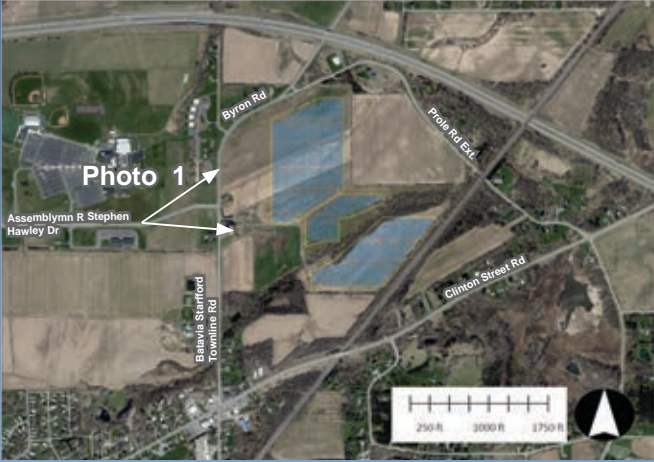


Photo 1 - Assemblyman R Stephen Hawley Dr. adjacent to Genesee Community College Campus
SIMULATED CONDITION WITH LANDSCAPE MITIGATION (MATURE GROWTH)

PHOTO LOCATION MAP



Photo 2 - Project Entrance at Batavia Stafford Townline Road near #8215
EXISTING CONDITION

PHOTO LOCATION MAP



Photo 2 - Project Entrance at Batavia Stafford Townline Road near #8215
SIMULATED CONDITION WITH LANDSCAPE MITIGATION (YEAR 1 GROWTH)

PHOTO LOCATION MAP



Photo 2 - Project Entrance at Batavia Stafford Townline Road near #8215
SIMULATED CONDITION WITH LANDSCAPE MITIGATION (YEAR 5 GROWTH)

PHOTO LOCATION MAP



Photo 2 - Project Entrance at Batavia Stafford Townline Road near #8215
SIMULATED CONDITION WITH LANDSCAPE MITIGATION (MATURE GROWTH)

PHOTO LOCATION MAP



Photo 3 - Byron Road near #8122
EXISTING CONDITION

PHOTO LOCATION MAP



Photo 3 - Byron Road near #8122
SIMULATED CONDITION WITH LANDSCAPE MITIGATION (YEAR 1 GROWTH)

PHOTO LOCATION MAP



Photo 3 - Byron Road near #8122
SIMULATED CONDITION WITH LANDSCAPE MITIGATION (YEAR 5 GROWTH)



Photo 3 - Byron Road near #8122
SIMULATED CONDITION WITH LANDSCAPE MITIGATION (MATURE GROWTH)





Photo 4 - Prole Road Ext.
SIMULATED CONDITION WITH LANDSCAPE MITIGATION (YEAR 1 GROWTH)



Photo 4 - Prole Road Ext.
SIMULATED CONDITION WITH LANDSCAPE MITIGATION (YEAR 5 GROWTH)



Photo 4 - Prole Road Ext.
SIMULATED CONDITION WITH LANDSCAPE MITIGATION (MATURE GROWTH)